

Room Controller Touch Effect Regulation

Quick User Guide

Snelle Gebruikershandleiding / Hurtigveiledning /
Schnellanleitung / Stručný návod k obsluze



- EN: For the extended user guide and other detailed information about xComfort visit www.eaton.com/xcomfort or www.xcomfort.com or use the QR-code
- DE: Für das erweiterte Benutzerhandbuch und detaillierte Informationen zum xComfort System besuchen Sie www.eaton.com/xcomfort oder www.xcomfort.de oder verwenden Sie den QR-code
- AT: Für das erweiterte Benutzerhandbuch und detaillierte Informationen zum xComfort System besuchen Sie www.eaton.com/xcomfort oder www.xcomfort.at oder verwenden Sie den QR-code
- NO: For en mer omfattende brukerveiledning og mer informasjon om xComfort, besøk www.xcomfort.no eller www.eaton.com/xcomfort, eller bruk QR-koden
- NL: Voor de uitgebreide gebruikershandleiding en meer gedetailleerde informatie over xComfort ga naar www.eaton.com/xcomfort of www.xcomfort.nl of maak gebruik van de QR-code
- CZ: Pro podrobnější návod k obsluze a další podrobné informace o xComfort návštěvte www.eaton.com/xcomfort nebo www.xcomfort.cz nebo použijte QR kód



www.eaton.com/recycling

Quick_Insta_card_RC_TEffect_Regulation.indd
01.2021b / IL019251ZU / 136211214

EATON

Powering Business Worldwide

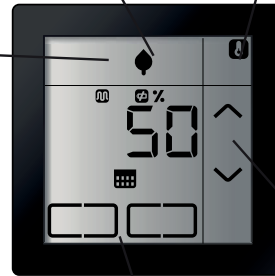
© 2021 by Eaton Industries (Austria) GmbH
Eugenia 1, 3943 Schrems, Austria
www.eaton.eu/documentation
All Rights Reserved, Printed in Austria

Main menu
Hoofdmenu
Hovedmeny
Hauptmenü
Hlavní menu

Active operation mode
Frost protection
Night / Standby
Economy
Day / Comfort

Select view
Regulation value
Floor temperature
Clock
Outdoor temperature

Enter operation mode - menu



Status info
Week program active
Floor regulation active
Low battery

Adjust regulation value

Optional
2 virtual pushbutton

Operation mode - menu
Operation mode -menu
Driftsmodus - menyen
Betriebsart - Menü
Provozní režim - nabídka

Select operation mode
Frost protection
Night / Standby
Economy
Day / Comfort



Select week program
Program ON
Program OFF

Enter edit mode

Edit mode - menu
Edit mode - menu
Redigeringsmodus - menyen
Edit-Modus - Menü
Editační režim - nabídka

Edit operation mode
Frost protection
Night / Standby
Economy
Day / Comfort

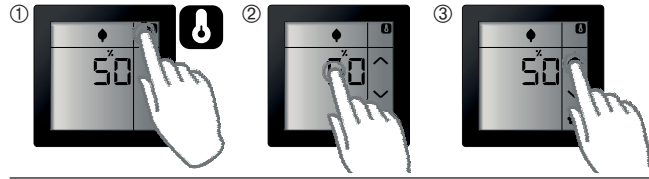


Change set-point

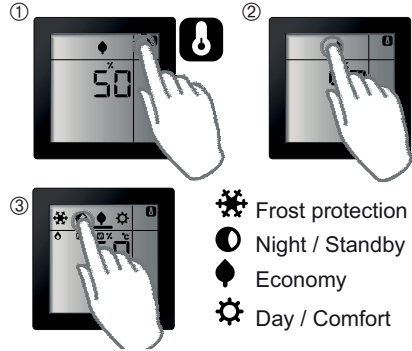
Edit week program

Leave edit mode

Adjust current regulation value / Huidige regelwaarde aanpassen / Juster gjeldende prosentverdi / Den aktuellen Regelwert anpassen / Změna aktuální procentuální hodnoty

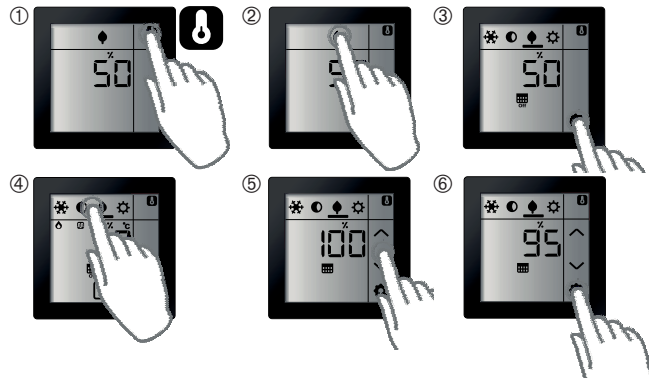


Switch to another regulation value (Operation mode) / Overschakelen naar een andere regelwaarde (bedrijfsmodus) / Velg predefinert varmemodus / Auf einen andern Regelwert umschalten (Betriebsart) / Změna regulační hodnoty (provozní režim)

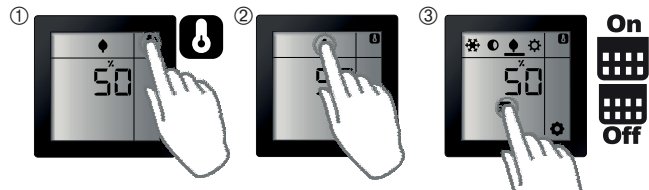


- Frost protection
- Night / Standby
- Economy
- Day / Comfort

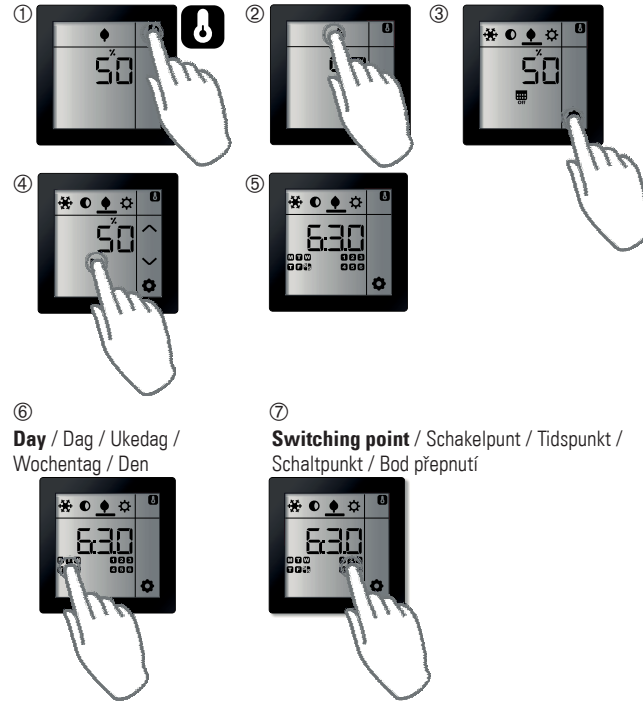
Change pre-defined regulation value / Wijzig de vooraf ingestelde regelwaarde / Endre predefinerte varmemodus / Vordefinierten Regelwert ändern / Změnit předdefinovanou procentuální hodnotu



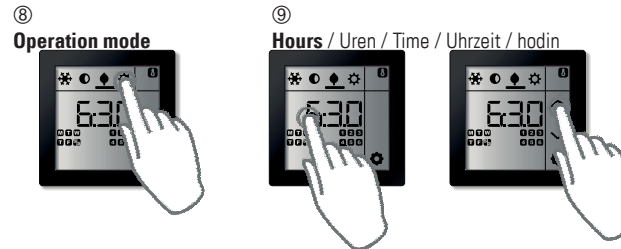
Activate/Deactivate Week Program / Activeer/Deactiveer Weekprogramma / Aktivere/Deaktivere ukeprogrammet / Wochenprogramm aktivieren/deaktivieren / Aktivace/Deaktivace týdenního programu



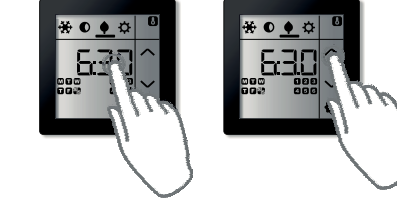
Edit Week Program Timer / Programmeren Weekprogramma / Redigere Ukeprogram / Zeitschalter für Wochenprogramm bearbeiten / Úprava časovače týdenního programu



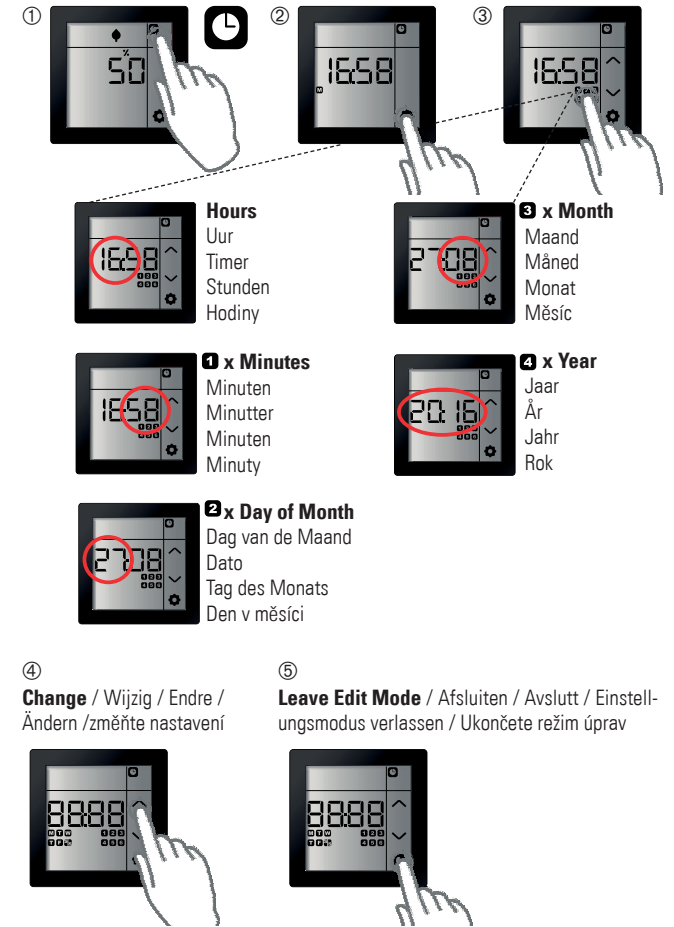
Day / Dag / Ukedag / Wochentag / Den **Switching point / Schakelpunt / Tidspunkt / Schaltpunkt / Bod přepnutí**



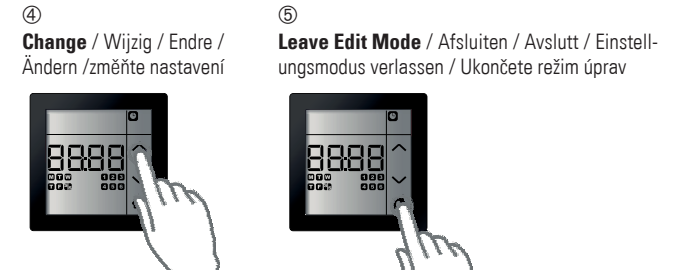
Operation mode **Hours / Uren / Time / Uhrzeit / hodin** **Minutes / Minuten / Minutter / Minuten / Minut**



Edit/Set Current Time and Date / Instellen Actuele Tijd en Datum / Stille inn tid og dato / Aktuelle Uhrzeit und Datum einstellen/bearbeiten / Úprava/Nastavení aktuálního času a data



- Hours**
Uur
Timer
Stunden
Hodiny
- 1 x Minutes**
Minuten
Minutter
Minuten
Minuty
- 2 x Day of Month**
Dag van de Maand
Dato
Tag des Monats
Den v měsíci
- 3 x Month**
Maand
Måned
Monat
Měsíc
- 4 x Year**
Jaar
År
Jahr
Rok



Change / Wijzig / Endre / Ändern / změňte nastavení **Leave Edit Mode / Afsluiten / Avslutt / Einstellungsmodus verlassen / Ukončete režim úprav**

